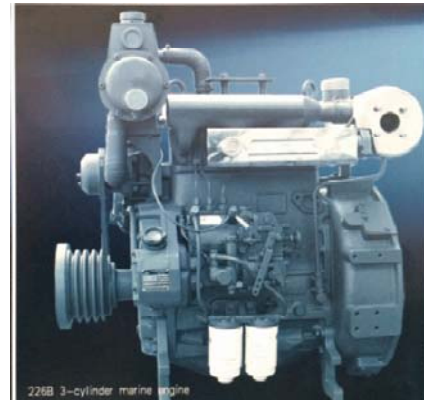


Main Engine 226B-3C Series

General Specifications

Bore & Stroke	105x120 mm
Displacement	3.12 L
Cylinder Number	3
Compression Ratio	15.5:1
Fuel System	Mechanical Pump
Aspiration	NA/T
Emission Standard	IMO Tier II



Duty	Model	HP	kW	RPM
P1	D226B-3C1	48	35	1800
P1	TD226B-3C	54	40	1500

Duty	Model	HP	kW	RPM
P1	TD226B-3C1	68	50	1800
P1				

Standard Equipment

Engine and block

- Cast iron gantry type structure block
- One-piece forged crankshaft
- Separate cast iron cylinder heads and wet liners
- Aluminium alloy pistons with gallery oil cooling

Cooling system

- Fresh/raw water heat exchanger with integrated thermostatic valve
- Cast-iron centrifugal fresh water pump, mechanically driven by belt
- Self-priming raw water pump, mechanically driven

Lubrication system

- Spin-on full-flow lub oil filter

Optional Equipment

- Different harness length of remote monitor

Dimensions

Length	890 mm
Width	550 mm
Height	1060 mm
Net Weight	460kg

Fuel system

- In-line fuel injection pump
- Duplex fine filter and large capacity pre-filter for better efficiency

Intake air and exhaust system

- Insulated exhaust manifold and exhaust expansion joint

Electrical system

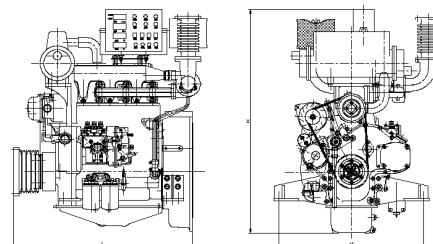
- 24V electric starter motors and battery charging alternator
- Standard sensor connector

Flywheel and housing

- SAE3 flywheel housing and 11.5" flywheel

Certification

- CCS



Distributed By:

Manufacturer: Weichai Power Co., Ltd
 Address: 197 A, Fushou East Street, High-Tech
 Development Zone, Weifang, China
www.weichai.com

